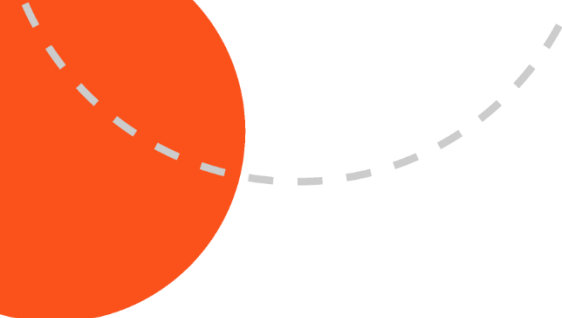




23 High Street, Benfleet SS7 1NA

2 bed cottage / £1,200 pcm / t. 01702 555888

amos

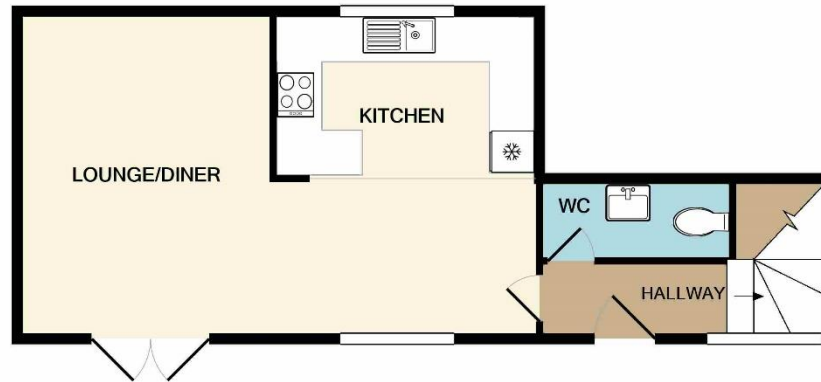


A rare opportunity to rent a modern **two bedroom** cottage in a sought after location in Benfleet a stones throw from the train station and amenities. Offering a modern kitchen, open plan lounge and dining area, downstairs W/C, three piece bathroom suite, two bedrooms, courtyard and off street parking!

Find us on



**A space to
call home.**



GROUND FLOOR
APPROX. FLOOR
AREA 419 SQ.FT.
(39.0 SQ.M.)



1ST FLOOR
APPROX. FLOOR
AREA 481 SQ.FT.
(44.7 SQ.M.)

TOTAL APPROX. FLOOR AREA 900 SQ.FT. (83.6 SQ.M.)

Whilst every attempt has been made to ensure the accuracy of the floor plan contained here, measurements of doors, windows, rooms and any other items are approximate and no responsibility is taken for any error, omission, or mis-statement. This plan is for illustrative purposes only and should be used as such by any prospective purchaser. The services, systems and appliances shown have not been tested and no guarantee as to their operability or efficiency can be given
Made with Metropix ©2021



Highlights

- / Two Bedroom Cottage**
- / Lounge/Dining Area 11'11 x 7'0**
- / Modern Kitchen 11'8 x 7'4 With Integrated Appliances**
- / Ground Floor Cloakroom**
- / Master Bedroom 14'3 x 14'10**
- / Bedroom Two 9'4 x 8'3**
- / Modern Three Piece Bathroom Suite**
- / Redecorated Throughout**
- / New Carpets Throughout**
- / Great Location**
- / Off Street Parking**
- / Private Courtyard**
- / Situated Close To Benfleet Train Station**
- / EPC Band D**
- / Available June**



Lounge/Dining Area \

11'11 x 7'0

Double glazed French doors, fitted carpet, wall mounted electric heater, power points.

Modern Kitchen \

11'8 x 7'4

Double glazed window, country style units to eye and base level, square edge work surfaces, butler sink, integrated washing machine, integrated dishwasher, integrated oven with hob above, power points, tiled flooring.

Ground Floor Cloakroom \

Low flush WC, wash basin.

Master Bedroom \

14'3 x 14'10

Two double glazed windows, fitted carpet, wall mounted electric heater, power points.

Bedroom Two \

9'4 x 8'3

Double glazed window, fitted carpet, wall mounted electric heater, power points.

Modern Three Piece Bathroom Suite \

Obscure double glazed window, three piece suite comprising panelled bath with shower above, low flush WC, wash basin, part tiled walls, tiled effect flooring.

Outside \

Courtyard style garden, off street parking.

Available June / Full Referencing Required / No Pets / EPC Band D /





at the heart of property.

Our professional and personal approach to property isn't just limited to residential sales. With a thriving commercial team, a dedicated mortgages expert and the longest established lettings and management department in Hadleigh and Hockley, we offer clients an exceptional experience, no matter what service they need.

Hadleigh Office: 319 London Road, Essex SS7 2BN **t:** 01702 555 888 **e:** hadleigh@amosstates.com

Hockley Office: 1A Spa Road, Hockley, Essex, SS5 4AZ **t:** 01702 207 720 **e:** hockley@amosstates.com

amosstates.com