

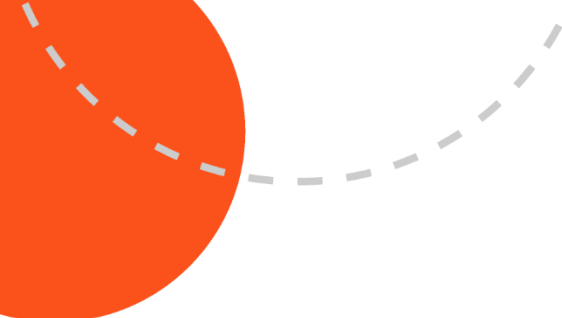


56 Sherwood Crescent, Hadleigh SS7 2LG

2 bed semi chalet / £1,250 pcm / t. 01702 555888

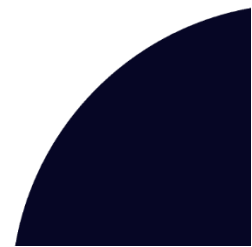
**amos**



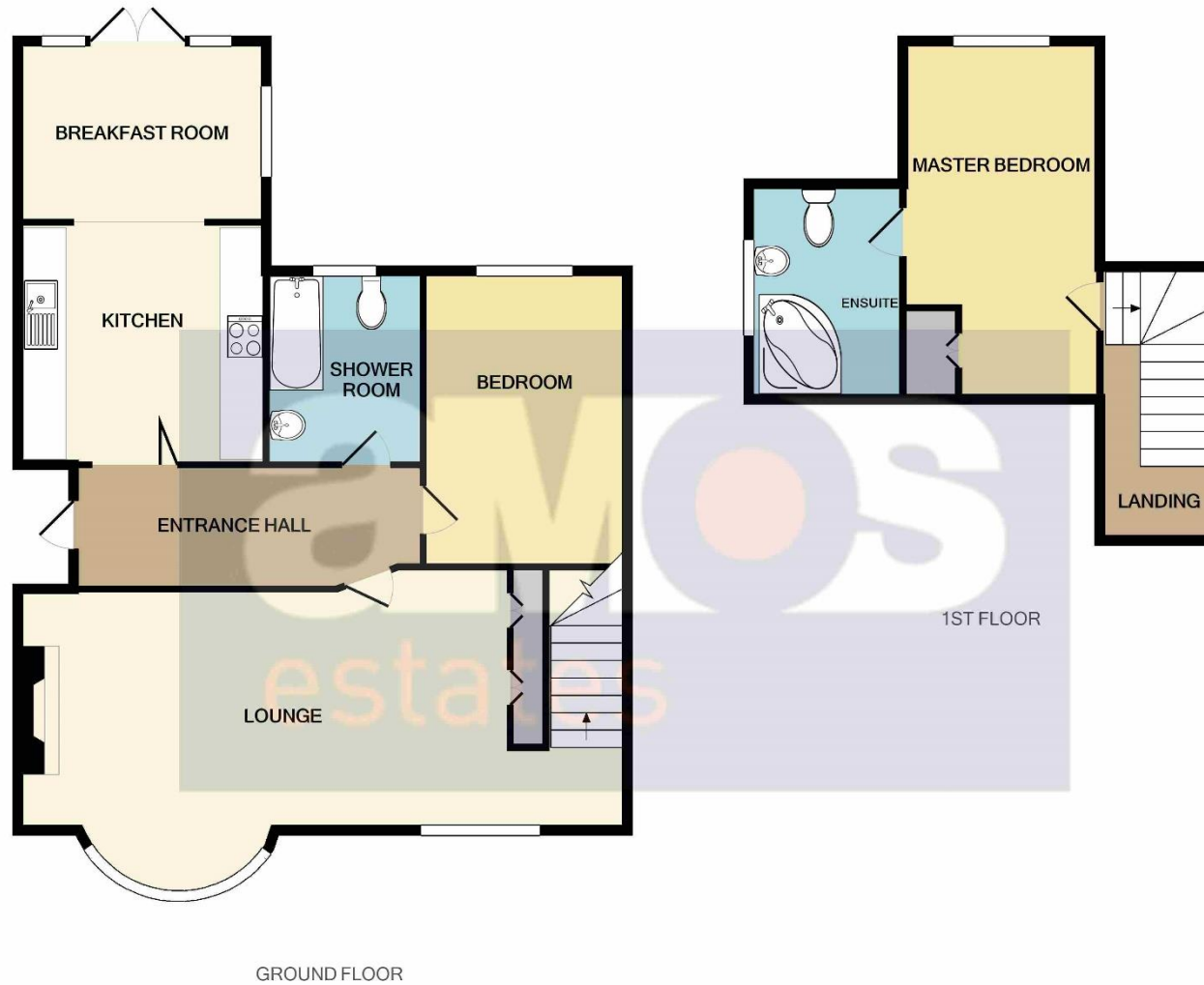


We are pleased to offer this large **two bedroom** chalet style bungalow in central Hadleigh TO LET! Offering spacious living accommodation, a modern kitchen with dining area and patio doors leading to the well maintained south facing rear garden, a newly installed white three piece bathroom suite, two bedrooms with master and three piece en-suite on the first floor, plus off street parking. Available Immediately.

Find us on



**A space to  
call home.**



Whilst every attempt has been made to ensure the accuracy of the floor plan contained here, measurements of doors, windows, rooms and any other items are approximate and no responsibility is taken for any error, omission, or mis-statement. This plan is for illustrative purposes only and should be used as such by any prospective purchaser. The services, systems and appliances shown have not been tested and no guarantee as to their operability or efficiency can be given  
Made with Metropix ©2021



## Highlights

- / Two Bedroom Semi Detached Chalet Bungalow**
- / Quiet, Central Hadleigh Location**
- / Recently Refurbished**
- / Lounge 22'03 x 12'03**
- / Modern Kitchen 7'10 x 9'01**
- / Dining Area 8'03 x 9'05**
- / Bedroom Two 10'00 x 5'11**
- / Newly Fitted Bathroom Suite 7'11 x 4'05**
- / First Floor Bedroom One 16'06 x 8'05**
- / En-Suite Bathroom 10'02 x 4'09**
- / Plenty Of Storage Throughout**
- / Well Maintained South Facing Rear Garden**
- / Off Street Parking With Front Garden**
- / Full Referencing Required**
- / Available Immediately**

## Lounge \

22'03 x 12'03

Double glazed windows, wood effect flooring, stairs to first floor accommodation with built in storage under, radiators, power points.

## Modern Kitchen \

7'10 x 9'01

Cream units to eye and base level with wood effect work surface over, integrated cooker with hob above, sink and drainer unit, power points, tiled effect flooring, open to:

## Dining Area \

8'03 x 9'05

Continuation of flooring, radiator, power points, double opening doors with side panels opening to rear garden.

## Bedroom Two \

10'00 x 5'11

Double glazed window, fitted wardrobes to one wall, wood effect flooring, power points, radiator.

## Newly Fitted Bathroom Suite \

7'11 x 4'05

Newly fitted suite comprising panelled bath with shower above, wash basin with storage below, low flush WC, tiled walls, tiled flooring, double glazed window, towel radiator.



### **First Floor Bedroom One \**

16'06 x 8'05

Double glazed window, fitted carpet, power points, radiator.

### **En-Suite Bathroom \**

10'02 x 4'09

Three piece suite comprising corner bath, wash basin, low flush WC, tiled flooring, part tiled walls, towel radiator, Velux window.

### **Rear Garden \**

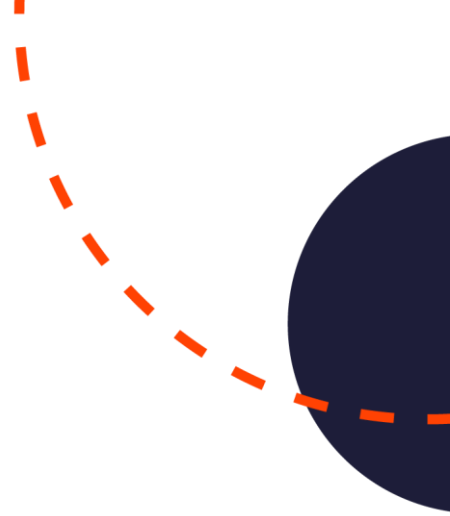
Small patio area, laid to lawn, mature tree and shrubs, fenced boundaries.

### **Front Garden \**

Block paved providing off street parking, lawn area with shrub borders.

**Available Immediately \ Full Referencing  
Required \ EPC on Order \**





# at the heart of property.

Our professional and personal approach to property isn't just limited to residential sales. With a thriving commercial team, a dedicated mortgages expert and the longest established lettings and management department in Hadleigh and Hockley, we offer clients an exceptional experience, no matter what service they need.

**Hadleigh Office:** 319 London Road, Essex SS7 2BN **t:** 01702 555 888 **e:** hadleigh@amosstates.com

**Hockley Office:** 1A Spa Road, Hockley, Essex, SS5 4AZ **t:** 01702 207 720 **e:** hockley@amosstates.com

[amosstates.com](https://amosstates.com)