



Southwold Crescent, Benfleet, Essex, SS7 5SW
3 Bedroom Semi-Detached Family Home / £2,000pcm / t. 01702 555888



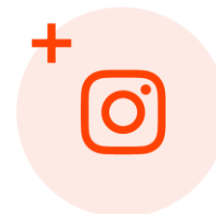




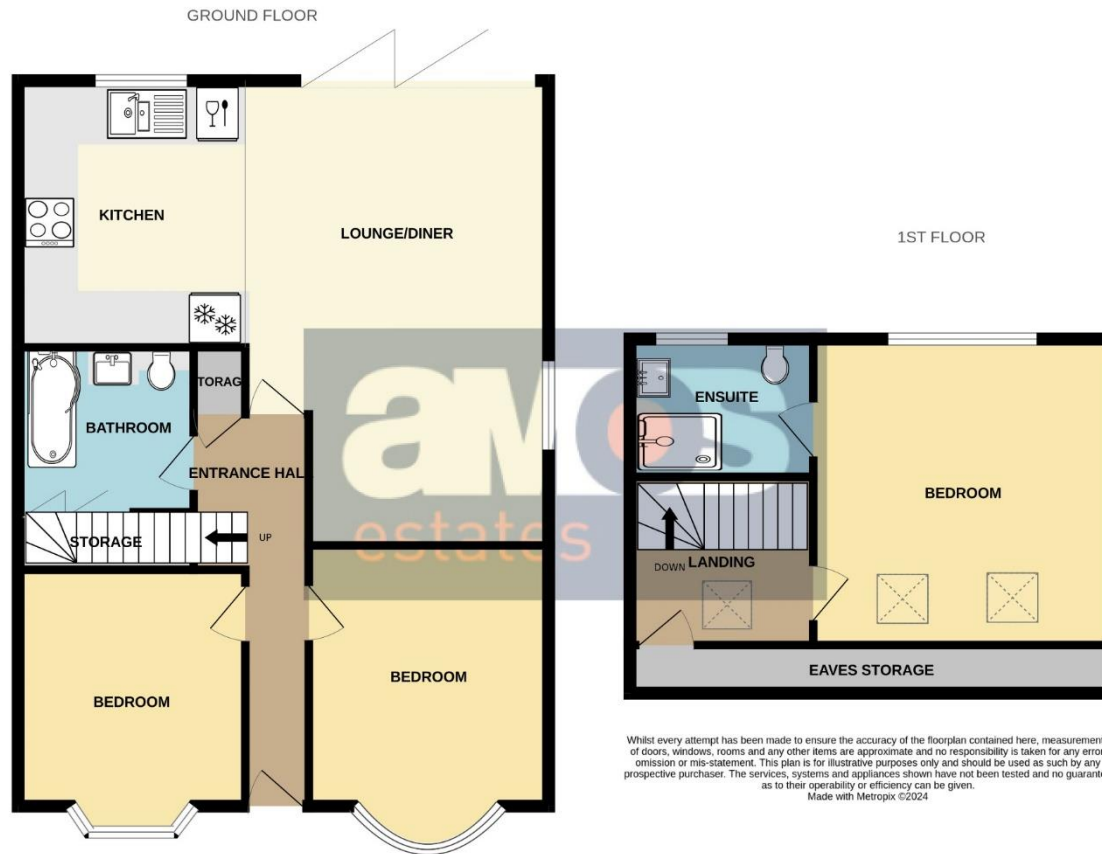
Amos Estates are proud to present this fantastic opportunity to rent a three bedroom semi detached house in Benfleet having been extended and refurbished to a high standard throughout.

The property offers a large open plan living and dining area with newly installed luxury kitchen housing integrated appliances. To the ground floor there are two bedrooms and a high end bathroom suite with a large master bedroom and luxury en-suite to the first floor. Externally there is a rear garden with patio area and off street parking for several vehicles.

Find us on



**A space to
call home.**



Whilst every attempt has been made to ensure the accuracy of the floorplan contained here, measurements of doors, windows, rooms and any other items are approximate and no responsibility is taken for any error, omission or mis-statement. This plan is for illustrative purposes only and should be used as such by any prospective purchaser. The services, systems and appliances shown have not been tested and no guarantee as to their operability or efficiency can be given.
Made with Metropix ©2024





Highlights

- / Spacious Three Bedroom Semi-Detached Family Home
- / Open Plan Living With Bi-Fold Doors
- / Ground Floor Bathroom Suite
- / High Specification Throughout
- / Three Piece Shower Suite
- / Off Street Parking
- / Ample Storage Facilities
- / Gas Central Heating Via Combination Boiler
- / Brand New Kitchen & Bathroom Suite
- / Available From September
- / Council Tax Band C
- / EPC Band C

Composite entrance door with inset double glazed panel leading to;

Entrance Hall /

Luxury vinyl tile flooring, radiator, carpeted stairs to first floor accommodation, power points, smooth plastered ceiling, white doors off.

**Open Plan Lounge/Kitchen/Diner /
23'05 X 24'05 maximum**

Lounge/Dining Area /

23'05 X 14'05 reducing to 11'

Luxury vinyl tile flooring, radiator and two vertical radiators, double glazed bi-folding doors leading to rear garden, double glazed window to side aspect, power points, smooth plastered ceiling with inset spotlights.

Kitchen /

10'06 X 10'01

High specification charcoal grey units at both eye and base level with marble effect square edge work surface over and tiled splashback, inset stainless steel one and a half single drainer sink unit with mixer tap, integrated CDA dishwasher, integrated Blomberg fridge freezer, integrated ZANUSSI oven with four ring induction hob and stainless steel extractor fan above, luxury vinyl tile flooring, smooth plastered ceiling with inset spotlights, power points.

Bedroom Two /

13'05 into bay X 11'02

Double glazed bay window to front aspect, fitted carpet, radiator, power points, smooth plastered ceiling.

Bedroom Three /

11'02 X 10'11 plus bay

Double glazed bay window to front aspect, fitted carpet, radiator, power points, smooth plastered ceiling.

Bathroom /

7'11 X 7'09

Three-piece white suite comprising of p-shaped bath with glass shower screen and wall mounted shower over with handheld shower attachment, vanity unit with integrated wash hand basin with mixer tap and toilet with push button flush, chrome heated towel rail, wall mounted mirror, shaver point, tiled walls and floor, storage cupboard housing washing machine, smooth plastered ceiling.



First Floor Accommodation /

Landing /

Carpeted stairs to ground floor accommodation, power points, eaves storage, double glazed Velux roof window, fitted carpet.

Bedroom One /

14'10 X 14'09

Two double glazed Velux roof windows with pull down blind, double glazed window to rear aspect, power points, smooth plastered ceiling with inset spotlights, fitted carpet, radiator.

En-Suite Shower Room /

8'05 X 6'04

Three piece white suite comprising of a fully tiled walk-in shower with wall mounted shower unit, overhead orbit shower attachment, removable handheld orbit shower attachment and glass shower screen, low-level WC with dual push button flush, vanity unit with integrated wash hand basin with mixer tap and wall mounted mirror above, shaver point, extractor fan, obscured double glazed window to side aspect, wall mounted hand towel rail, part tiled walls, tiled flooring, chrome heated towel rail.



Rear Garden /

Stepped patio to immediate rear with remainder laid to lawn, fenced boundaries, and side access gate to the front of the property.

Front of Property /

Block paved driveway providing off street parking for vehicles, side access gate leading to rear garden, fenced boundaries to side and brick wall to front.

Location /

The property is located within a quiet residential area yet close to the local amenities at 'Tarpots' and the Secondary school. Also within easy access to the London Road and Sadlers Farm roundabout serving the major trunk roads for the A127, A130 and A13.



PLEASE NOTE:-

We recommend our customers use our panel of conveyancers/Solicitors. It is your decision whether you choose to deal with our recommendation, and you are under no obligation to do so. You should know that we may receive a referral fee of £150 to £200 per transaction from them.

Should you arrange a Mortgage through our recommended mortgage advisor, again of which there is no obligation we will receive a commission fee. The amount of commission will depend on the size of the loan and any associated products that you decide to take.

The Consumer Protection from Unfair Trading Regulations 2008 (CPRs). These details are for guidance only and complete accuracy cannot be guaranteed. If there is any point, which is of particular importance, verification should be obtained. They do not constitute a contract or part of a contract. All measurements are approximate. No guarantee can be given with regard to planning permissions or fitness for purpose. No apparatus, equipment, fixture or fitting has been tested. Items shown in photographs are NOT necessarily included. Interested Parties are advised to check availability and make an appointment to view before travelling to see a property.







at the heart of property.

Our professional and personal approach to property isn't just limited to residential sales. With a thriving commercial team, a dedicated mortgages expert and the longest established lettings and management department in Hadleigh and Hockley, we offer clients an exceptional experience, no matter what service they need.

Hadleigh Office: 319 London Road, Essex SS7 2BN **t:** 01702 555 888 **e:** hadleigh@amosstates.com

Hockley Office: 1A Spa Road, Hockley, Essex, SS5 4AZ **t:** 01702 207 720 **e:** hockley@amosstates.com

amosstates.com