

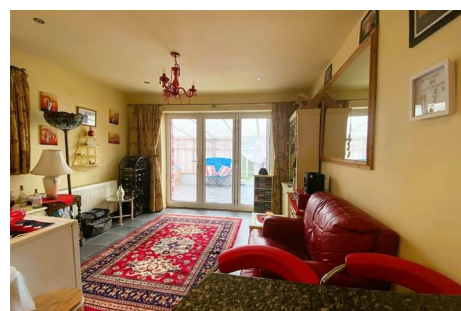
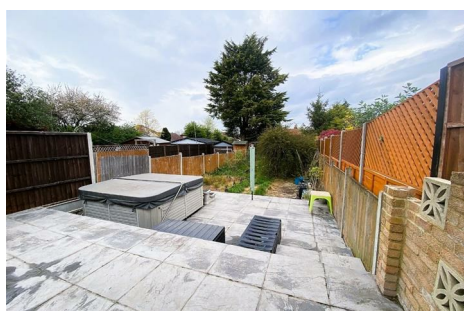
01634 37 37 37 | sales@jacksonsproperty.co.uk
01634 37 37 38 | lettings@jacksonsproperty.co.uk

JACKSONS

jacksonsproperty.co.uk

 [jacksonsrainham](https://www.facebook.com/jacksonsrainham)

 [@JacksonsRainham](https://twitter.com/JacksonsRainham)



53 Arthur Road

Rainham, Gillingham, ME8 9BT

Boasting NO ONWARD CHAIN & Generous Living Accommodation This Is A Must For Your Viewing List! Step behind the modest façade to find deceptively spacious property with the potential to make it your own. Although in need of improvement in some areas, the popular location, driveway and large rear garden make this the perfect opportunity to make your forever home.

Offers In Excess Of £325,000 Freehold

53 Arthur Road

Rainham, Gillingham, ME8 9BT



- Semi Det Dutch Barn
- Medway Council Band D
- Two Bedrooms
- EPC Rating D
- Lots of Living Sapce
- View By Appointment

Hallway

Lounge

14'2 x 12'11 (4.32m x 3.94m)

Fitted Kitchen

17'10 x 12'11 (5.44m x 3.94m)

Dining Room

12'11 x 8'7 (3.94m x 2.62m)

Conservatory

18'2 x 15'7 (5.54m x 4.75m)

Bathroom

Bedroom 1

14'4 x 11'7 (4.37m x 3.53m)

Bedroom 2

11'7 x 10'1 (3.53m x 3.07m)

Rear Garden

100' approx (30.48m approx)

Driveway to Front

Agents Note

VIEWING ARRANGEMENTS

Strictly by prior appointment with Jacksons on
01634 37 37 37

TENURE

Freehold

MEASUREMENTS

All Measurements Are Approximate. These sales particulars have been prepared by Jacksons Estate Agents upon the instructions of the vendor(s). Services, fittings and equipment referred to within the sales particulars have not been tested and no warranties can be given. Accordingly the prospective buyer(s) must make their own enquiries regarding such matters.

ADDITIONAL SERVICES

To enable you to budget for your move, we are able to provide you with a complete breakdown of all expenses associated with moving, including legal fees, survey fees, early repayment charges, removal fees and all aspects of mortgage charges.



Directions

The postcode which you will need to locate this property is ME8 9BT



Floor Plan



Whilst every attempt has been made to ensure the accuracy of the floorplan contained here, measurements of doors, windows, rooms and any other items are approximate and no responsibility is taken for any error, omission or mis-statement. This plan is for illustrative purposes only and should be used as such by any prospective purchaser. The services, systems and appliances shown have not been tested and no guarantee as to their operability or efficiency can be given.
Made with Metropix ©2022.

These particulars, whilst believed to be accurate are set out as a general outline only for guidance and do not constitute any part of an offer or contract. Intending purchasers should not rely on them as statements of representation of fact, but must satisfy themselves by inspection or otherwise as to their accuracy. No person in this firms employment has the authority to make or give any representation or warranty in respect of the property.

