

The Gables

6a, Alderbrook Road, Solihull, B91 1NH



BY DESIGN

Welcome to The Gables.

This magnificent five-bedroom family home spans three floors and has been finished throughout to the highest of standards, offering both luxury and practicality in equal measure.

Each of the five generously sized bedrooms boasts its own private en-suite, creating an ideal balance of comfort and privacy for the whole household.

The spacious bedrooms benefit from beautifully designed built-in cabinetry, maximising both the space for storage and allowing ample room for study desks, dressing tables and seating.

At the heart of the home lies a superb open-plan kitchen, dining and sitting area—a light-filled space perfect for modern family living and entertaining. Sleek bi-fold doors seamlessly connect the indoors to the beautifully maintained lawned garden, offering effortless indoor-outdoor living.

The large central kitchen island creates a fantastic space to sit and socialise whilst food is being prepared,

with high-spec appliances which are sleek and beautifully integrated into the design of the modern kitchen.

Throughout the home there are further luxury finishes, from the oak and glass banisters, the designer lighting and the premium bathrooms.

The property is further enhanced by a secure, electric gated driveway, providing both privacy and convenience.

Situated in a sought-after location, the home benefits from excellent transport links, lies within catchment for highly regarded schools, and is just a short walk from Touchwood Shopping Centre with its wide array of shops, restaurants, and leisure facilities.



Watch
VIDEO TOUR







Built **2020**
 Internal Size **4,214 sq/ft**
 Bedrooms **5**
 Bathrooms **5**
 Reception Rooms **2**
 (Open-plan kitchen / dining / sitting room)
 Gated Driveway **4 Cars**
 Lawned Rear Garden
 High spec finishes throughout
 Utility Room
 Single Garage (internal access)
 Mains Gas / Electric / Water / Drainage

Council Tax **G**
 EPC Rating **B**

Solihull Metropolitan Borough Council







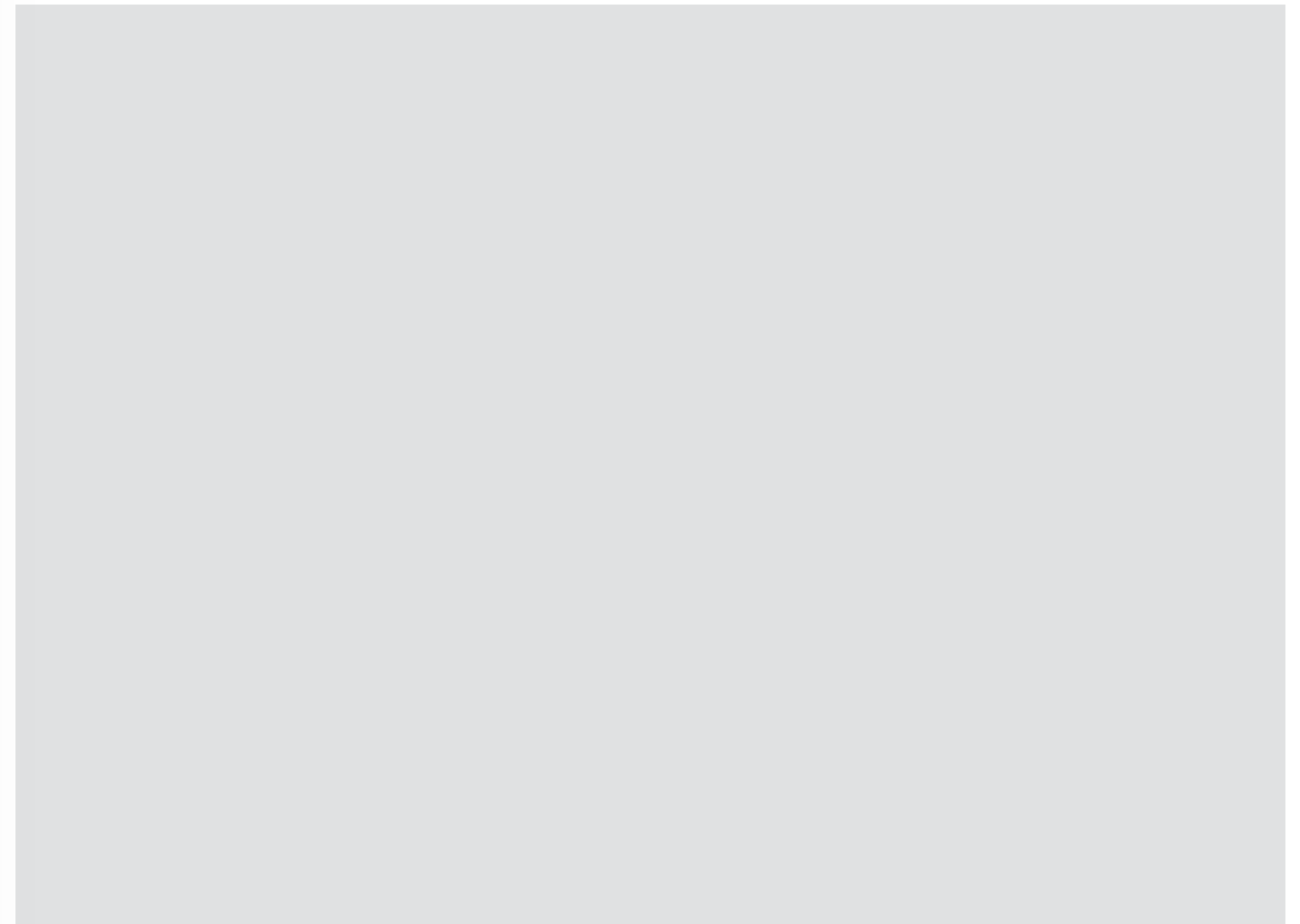
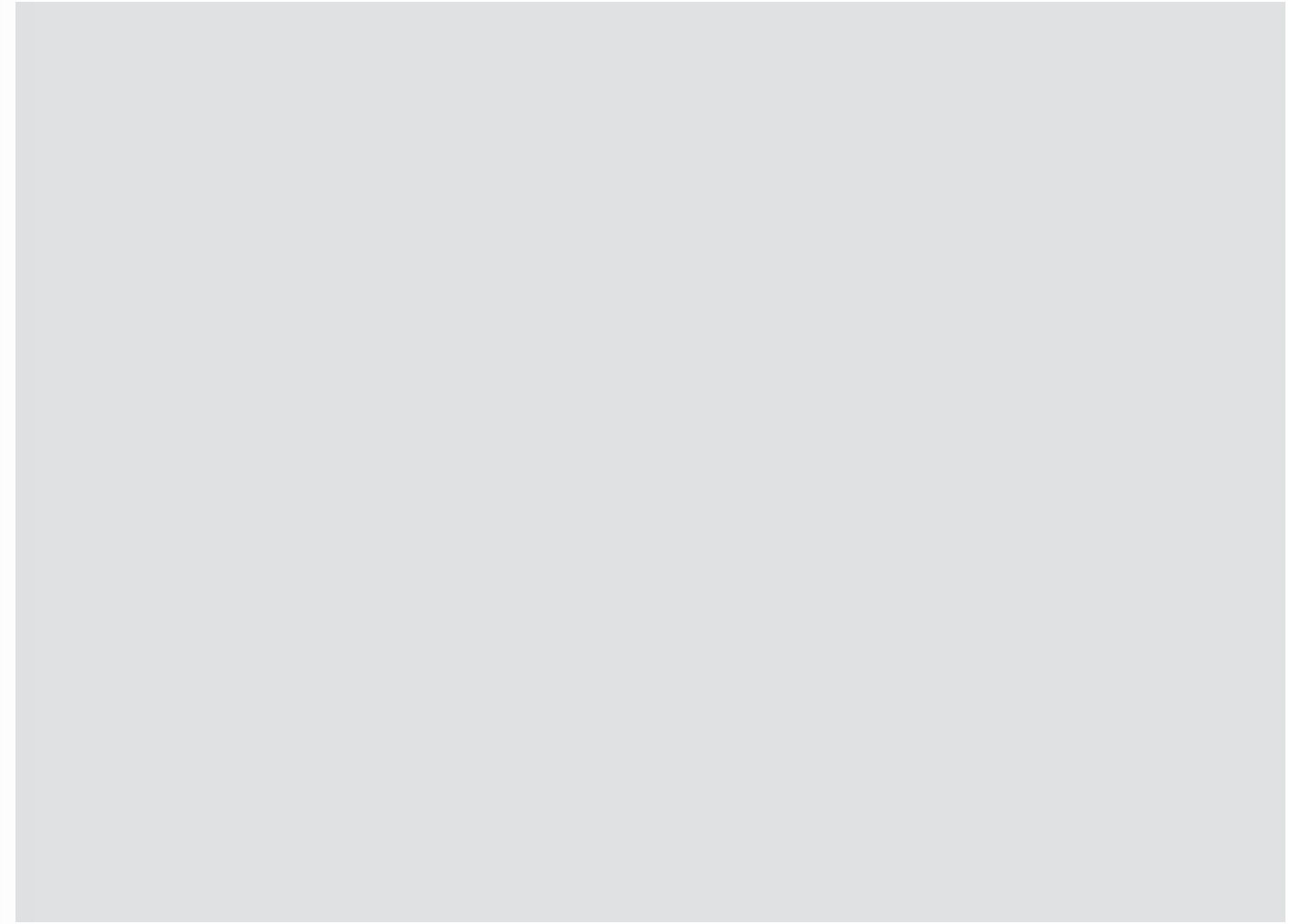






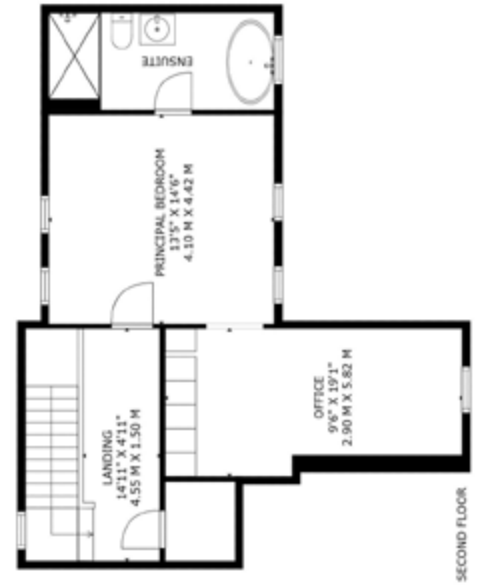
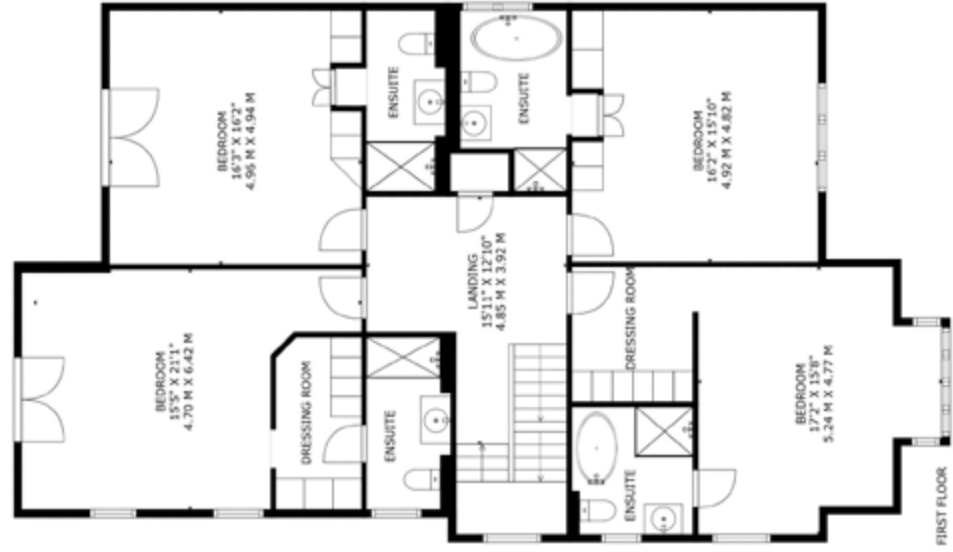
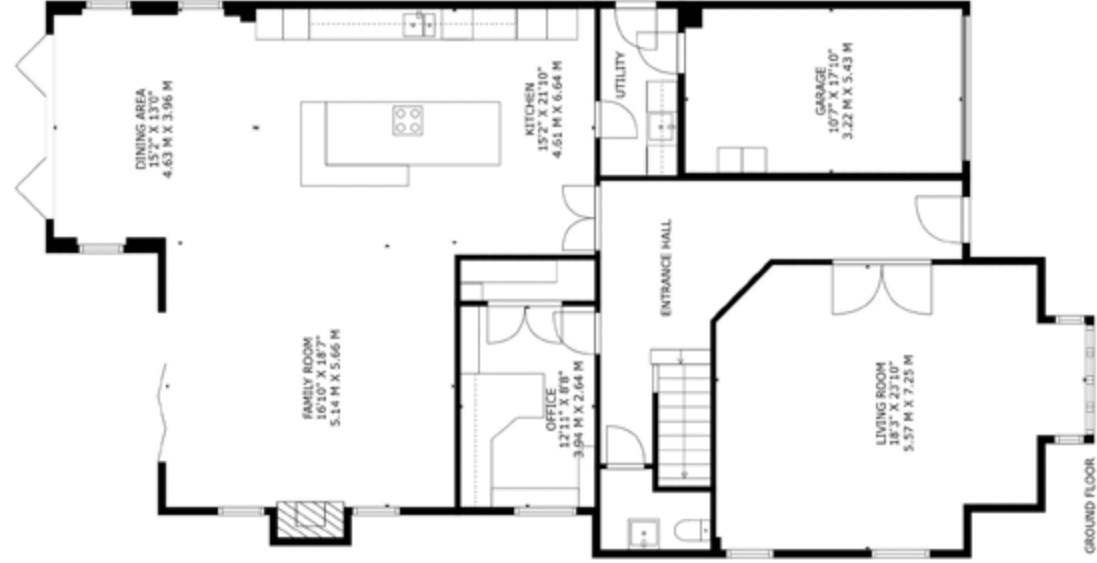












GROSS INTERNAL AREA: 4026 sq ft, 374 m²
GARAGE: 188 sq ft, 17 m²

OVERALL TOTALS: 4214 sq ft, 391 m²

SIZES AND DIMENSIONS ARE APPROXIMATE, ACTUAL MAY VARY. FLOORS MAY NOT BE SHOWN IN THEIR ACTUAL LOCATION





National & International marketing across

96 different websites

51 countries

25 different languages

261.86m potential buyers



Simon Cowie

Managing Director / Agent

simon.cowie@bydesignhomes.com

07845 663 334



Scan to view more properties



